

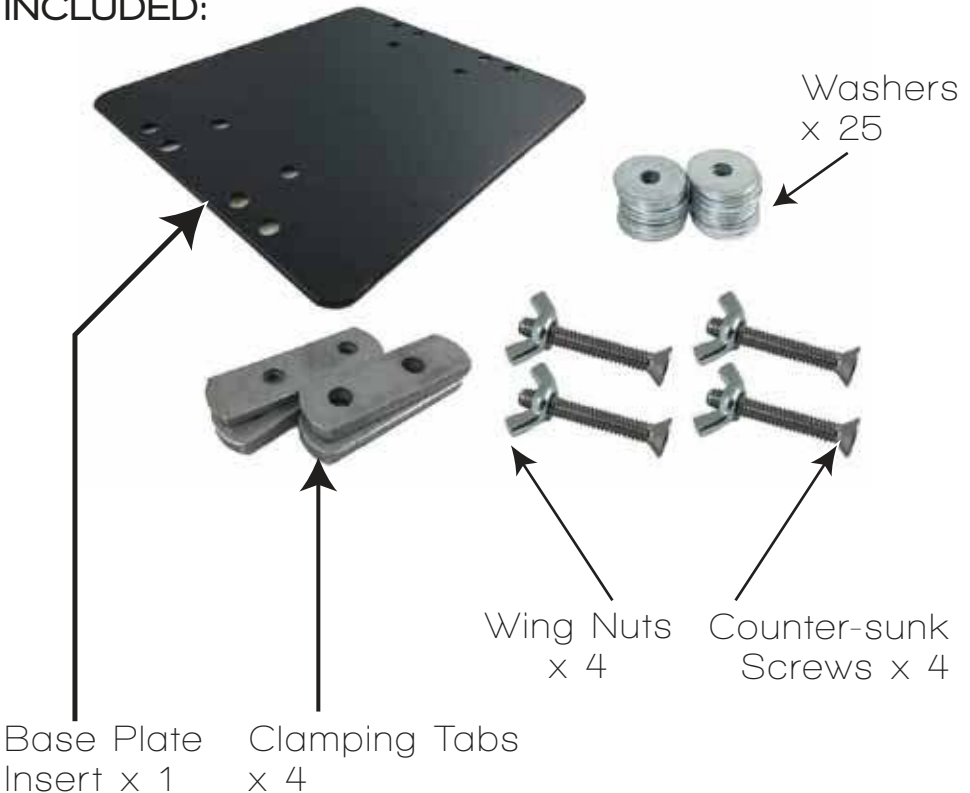
Safe Jack

BOTTLE JACK BASE PLATE INSERT INSTRUCTION MANUAL




PART NO. 14121

SUITABLE FOR USE WITH ANY BOTTLE JACK

INCLUDED:



The warnings, precautions, and instructions discussed in this manual cannot cover all possible conditions and situations that may occur. The operator must understand that common sense and caution are factors, which cannot be built into this product, but must be supplied by the operator.

-  **WARNING:** Do not allow anyone in or near the vehicle while using the jack. Sudden movement and weight shift can result in instability. Keep all personnel a safe distance away from the vehicle.
-  **WARNING:** Do not attempt to lift the vehicle on a side or longitudinal slope. The vehicle can slide or roll causing severe injury or death.
-  **WARNING:** Before lifting, place the vehicle's transmission in 'PARK' for automatic transmissions and Low Gear (1st gear) for manual transmissions. Set the vehicle's emergency brake. Block the wheel diagonal to the wheel that is being lifted with wheel chocks. Failure to follow these instructions can result in severe injury or death to personnel.



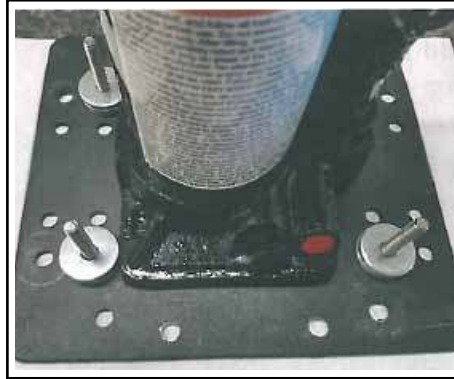
Bottle Jack installed on Base Plate Insert



Bottle Jack installed on Base Plate Insert, then on Universal Stabiliser Base Plate (Part No. 14000)

1.

SET UP SCREWS



Set your bottle jack on top of the base plate in the middle of the screws as shown. Screws can be moved to accommodate various sized jacks, so spend some time figuring out where the screws and tabs need to be attached to the plate.

Ideally, you want the jack ram to be located as close as possible to the centre of the Insert. NOTE: Jack bases vary, and it may not be possible to clamp in 4 places as shown.

2.

SET UP CLAMPING TABS



Stack washers on screws until each stack of washers is slightly shorter than the base of the jack.

Install the tabs over the screws and adjust the position of the jack to try to get the tabs to fit onto flat spots on the base of the jack. Make sure that you do not block the release valve with any of the clamps.

3.

FINALISE INSTALLATION



Add 1 or 2 washers on top of the clamping tabs and tighten down the wing nuts onto the tabs, until you feel that your Bottle Jack is securely attached to the Base Plate Insert.

OTHER SAFE JACK PRODUCTS



SAFE JACK
6 TONNE
BOTTLE JACK

PART NO. 14600



SAFE JACK
BOTTLE JACK
RECOVERY
KIT

PART NO. 14110



SAFE JACK
UNIVERSAL
STABILISER
BASE PLATE

PART NO. 14000



SAFE JACK
BOTTLE JACK
ROUND PAD

PART NO. 14150

EXCLUSIVE AUSTRALIAN DISTRIBUTOR

PROQUIP
VALUE ADDED PRODUCTS

PRO QUIP INTERNATIONAL PQI PTY LTD T/As
14 London Drive (PO Box 852), Bayswater VIC 3153 Australia
phone: (03) 9761 1110 email: sales@proquip.com.au

www.proquip.com.au