

Safe Jack

UNIVERSAL STABILISER BASE PLATE INSTRUCTION MANUAL

PART NO. 14000


SUITABLE FOR HI-LIFT/FARM JACKS WITH
FOOTPRINT MEASURING 18 X 10cm AND
BOTTLE JACKS WITH ANY SIZE FOOTPRINT



With Bottle Jack Insert
(Part No. 14121)

With Hi-Lift Jack Insert
(Part No. 14011)

**TO PREVENT SERIOUS INJURY, READ AND UNDERSTAND
ALL WARNINGS AND INSTRUCTIONS BEFORE USE**



The warnings, precautions, and instructions discussed in this manual cannot cover all possible conditions and situations that may occur. The operator must understand that common sense and caution are factors, which cannot be built into this product, but must be supplied by the operator.



WARNING SUMMARY



Do not allow anyone in or near the vehicle while using the jack. Sudden movement and weight shift can result in instability. Keep all personnel a safe distance away from the vehicle.

Do not attempt to lift the vehicle on a side or longitudinal slope. The vehicle can slide or roll causing severe injury or death.

Before lifting, place the vehicle's transmission in 'PARK' for automatic transmissions and Low Gear (1st gear) for manual transmissions. Set the vehicle's emergency brake. Block the wheel diagonal to the wheel that is being lifted, with wheel chocks.

Always use safety equipment when using this product, such as safety impact goggles, steel-toed boots and heavy duty work gloves.

Never allow anyone underneath any parts of the vehicle during jack operation at any time when the vehicle weight is being supported by the jack.

Always keep hands, fingers, and feet away from all moving parts of the Jack when applying or releasing a load. Remain clear of the vehicle during raising or lowering operations.

Do not attempt lifting a load with the jack that exceeds the load rating of the jack or Universal Base Plate. Doing so could cause serious personal injury and/or property damage.

Never modify the Base Plate or Inserts in an attempt to use it for a purpose it was not designed for.

Check jack for damage before using. Check for loose screws, misalignment or binding of moving parts, loose mounting, cracked or broken parts. Replace if damaged.

The 14000 Safe Jack Universal Stabiliser Base is designed to be used with standard hi-lift style jack base plates or bottle jacks.

Position the jack to lift only a single wheel station at a time. Do not use multiple jacks or lifting means to raise more than one wheel at a time.

Jack service must be performed only by qualified personnel. Service performed by unqualified personnel could result in a risk of injury.

Do not use the jack to support a vehicle over extended periods of time. The duration of the lifting task should be kept to a minimum. Always use jack stands to support a vehicle over an extended period of time.

FAILURE TO FOLLOW THESE INSTRUCTIONS CAN RESULT IN SEVERE INJURY OR DEATH TO PERSONNEL.

UNIVERSAL STABILISER BASE USAGE

The Universal Base Plate consists of a base that is 45.7 x 20.3cm (18 x 8 inches). It has a ground contact area of 927cm² (144 in²).

It is designed to be used with two types of Insert plates sized 20 x 18cm:

1. Hi-Lift Jack Base Plate Insert (Part No. 14011)

The Hi-Lift type Base Plate Insert also includes Stabiliser Cables and a Clevis Assembly to steady the vertical standard of the jack.

2. Bottle Jack Base Plate Insert (Part No. 14121)

The Bottle Jack Base Plate Insert also includes Tabs which are attached by washers and wingnuts, which are variable in height and direction to firmly attach any type of Bottle Jack securely to the Insert.

Bottle Jacks, Screw Jacks, Scissor Jacks and Hi-Lift type Jacks can be mounted to the Insert Plates, and then quickly and easily inserted and locked into the Universal Base Plate.

This establishes a large, firm, stable base from which to lift vehicles and structures.



Hi-Lift Jack Base Plate Insert
in Universal Base Plate (Part No. 14011)



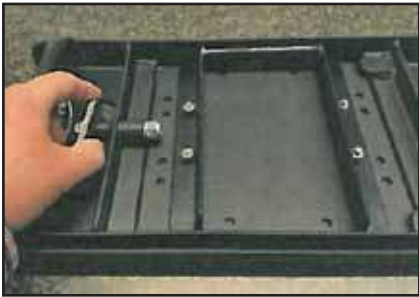
Bottle Jack Base Plate Insert
(Part No. 14121)

HI-LIFT INSERT INSTRUCTIONS

**** ENSURE YOU READ ALL INSTRUCTIONS IN THIS MANUAL ****



1. Insert plate with Hi-Lift shoe into Universal Base Plate, with bar of shoe on opposite side to cable attachment holes in Universal Base Plate.



2. Pull back Quick Release Pin on Universal Base Plate to set Insert snugly, then release pin.



3. Attach cables to the Universal Base Plate with screw as shown.



4. Secure cables with Clevis pins.

HI-LIFT INSERT INSTRUCTIONS



5. Insert the the Hi-Lift jack foot plate into the shoe, sliding under the bar.
Ensure the Nose of the Hi-Lift Jack is on the same side as the bar.



6. Then rock the jack back to seat the jack base securely in the shoe.



7. Pull cables up in front of the jack and pin upper clevis assembly to the front side of the jack using the Quick release pin. Ensure that you attach pin in the hole that makes the cables as tight as possible. The pin can be used to pry the clevis up to tighten the cables. Make sure the cables are not twisted and the adjusting wing nuts are at the bottom of the clevis.



8. Cables may be tightened or loosened somewhat by adjusting the wing nuts on each side of the upper clevis. Adjust the wing nuts until the slack has just come out of the cables, with the jack foot plate resting flat against the base place Insert.

CORRECT INSTALLATION IMAGES



GENERAL SAFETY INFORMATION

1. The cables should not be tight enough to tip the jack backwards. In general the jack should sit flat in the receiver of the Stabiliser Base and the slack should just be taken up on the cables.

IMPORTANT: Chock Wheel Diagonal to tyre being raised.

2. Use two wheel chocks on the tyre diagonal to the tyre being raised. For example, when changing the right rear tyre, chock the front left tyre.
3. If the Stabiliser Base is to be used on a hard smooth surface such as concrete, place a rubber mat or rug under the Base Plate. This will help to anchor the base to the ground. This is not necessary when using the Stabiliser Base on soft surfaces.

It cannot be over stressed that the safe operation and condition of the jack used with the Stabiliser Base Plate is critical to the overall safety of the operation.

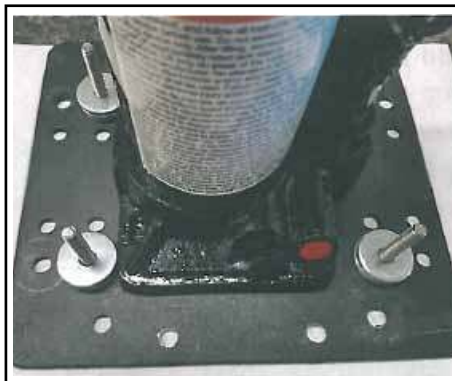
Follow the Jack Manufacturer's operation instructions, and review the numerous instructional videos by Safe Jack and various off-road specialists.

The following are general rules:

1. Inspect the jack before each use. Lubricate the jack. Verify that parts are not worn, bent or missing. If so, do not use the jack. Obtain replacement jack or repair.
2. Do not modify or weld to the jack.
3. Do not use it for anything other than its intended purpose.
4. Always lift at the designated lift point. Failure to do so will result in damage to the jack, damage to property or serious injury or death to personnel.

BOTTLE JACK INSERT INSTRUCTIONS

1. SET UP SCREWS



Set your bottle jack on top of the base plate in the middle of the screws as shown. Screws can be moved to accommodate various sized jacks, so spend some time figuring out where the screws and tabs need to be attached to the plate. Ideally, you want the jack ram to be located as close as possible to the centre of the Insert. NOTE: Jack bases vary, and it may not be possible to clamp in 4 places as shown.

2. SET UP CLAMPING TABS

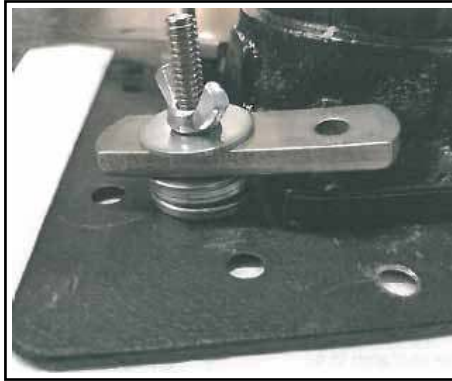


Stack washers on screws until each stack of washers is slightly shorter than the base of the jack.

Install the tabs over the screws and adjust the position of the jack to try to get the tabs to fit onto flat spots on the base of the jack. Make sure that you do not block the release valve with any of the clamps.

BOTTLE JACK INSERT INSTRUCTIONS

3. SECURE BOTTLE JACK TO INSERT PLATE



Add 1 or 2 washers on top of the clamping tabs and tighten down the wing nuts onto the tabs, until you feel that your Bottle Jack is securely attached to the Base Plate Insert.

4. SECURE INSERT TO UNIVERSAL BASE PLATE



Slide one end of the Insert Plate under the two tabs on the Universal Base Plate.

Pull back Quick Release Pin on Universal Base Plate to set Insert snugly, then release pin.

INSPECTION & MAINTENANCE

No maintenance should be needed on the Safe Jack Universal Stabiliser Base Plate or Inserts, with the exception of inspecting the cables and base for damage or wear, tightening bolts, and wiping debris from the jack after use.

If any parts are missing or broken:

Call Pro Quip on (03) 9761 1110
or email to
sales@proquip.com.au.

If any questions arise with any of the procedures outlined in this manual, or safety related questions in using this accessory, please contact Pro Quip on (03) 9761 1110 or email to sales@proquip.com.au.

CAUTION: Maintain labels and name plates on the Safe Jack Stabiliser Base Plate and the jack you use with the stabiliser.
These carry important information.
If unreadable or missing, contact Pro Quip or the jack manufacturer for a replacement.

WARRANTY TERMS & CONDITIONS

**This warranty is given by Pro Quip International.
ABN 39 109 672 326**

**Address: 14 London Drive, Bayswater Vic 3153
Email: sales@proquip.com.au Ph: (03) 9761 1110**

All components are warranted to be free of defects in materials and workmanship and carry a one year parts and labor warranty when used in accordance with the operating instructions and limitations.

Any claim under this warranty must be made within one year of the date of purchase of the product (as marked on the invoice/receipt). This warranty does not cover ordinary wear and tear, abuse, misuse, alterations of products, the use of improper fluids, or damage caused by the consumer.

To make a warranty claim, the consumer must deliver the product (with proof of purchase) at their cost, to the original place of purchase, along with an explanation in writing as to the nature of the claim. A warranty assessment will then be undertaken. If the claim is for a minor failure of the product, and the claim is accepted, Pro Quip International reserves the right to repair or replace it at its discretion. If the claim is for a major failure of the product, and the claim is accepted, the consumer will be entitled to a replacement or a refund as well as compensation for any other reasonably foreseeable loss or damage.

This warranty is provided in addition to other rights and remedies you have under Law: Our goods come with guarantees which cannot be excluded under the Australian Consumer Law. You are entitled to a replacement or refund for a major failure and to compensation for other reasonably foreseeable loss or damage. You are also entitled to have the goods repaired or replaced if the goods fail to be of acceptable quality and the failure does not amount to a major failure.

Determination of the authenticity of a warranty claim will be made only by Pro Quip International.

OTHER SAFE JACK HI-LIFT PRODUCTS



HI-LIFT JACK
BASE PLATE
INSERT

PART NO. 14011



SAFE JACK
SECURE
LIFTER

PART NO. 14020



SAFE JACK
STABILISER
LEGS

PART NO. 14030



SAFE JACK
60"
CABLES

PART NO. 14015

SAFE JACK – BOTTLE JACK PRODUCTS



BOTTLE JACK
BASE PLATE
INSERT

PART NO. 14130



SAFE JACK
6 TONNE
BOTTLE JACK

PART NO. 14600



SAFE JACK
BOTTLE JACK
RECOVERY
KIT

PART NO. 14110



SAFE JACK
6 TON
EXTENSION
SCREW COLLAR

PART NO. 14125



Scan the QR Code
to see the Stabiliser
Base in Action.

EXCLUSIVE AUSTRALIAN DISTRIBUTOR
PROQUIP
VALUE ADDED PRODUCTS

PRO QUIP INTERNATIONAL PQI PTY LTD T/As
14 London Drive (PO Box 852), Bayswater VIC 3153 Australia
phone: (03) 9761 1110 email: sales@proquip.com.au

www.proquip.com.au