

# PRO QUIP JERRY CANS

TESTED TOUGH TO AUSTRALIAN CONDITIONS  
COMPLIES WITH AUSTRALIAN STANDARD AS2906:2001

## Patented Safety Locking Pin



- ✓ Tested Safe, Tough, Durable and Corrosion Resistant
- ✓ Meets Defence Forces Specifications
- ✓ Passes all Drop Tests and will not leak under pressure
- ✓ No Loss of Integrity under Standards Flame Tests
- ✓ Fits Standard RV Racks
- ✓ Available in 5, 10 and 20 Litre Sizes
- ✓ Made in Latvia

PATENTED LOCKING PIN

AUSTRALIA #675806

CHINA #93118471.1

GERMANY #P4395052.

HUNGARY #219-155

LITHUANIA #3633

POLAND #P303352

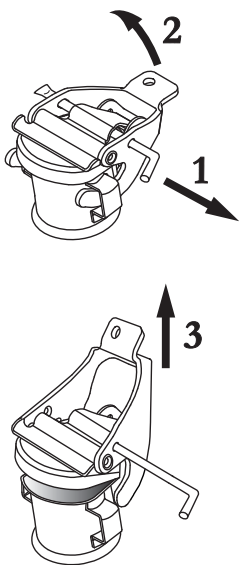
CZECH REPUBLIC #PV950-95

LATVIA #11453



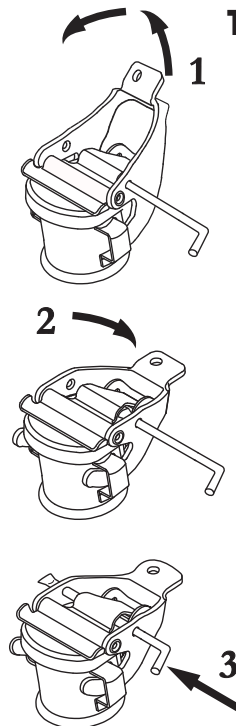
**TO PREVENT DAMAGING YOUR METAL JERRY CAN CLOSURE, AND THEREBY VOIDING YOUR WARRANTY, PLEASE FOLLOW THESE INSTRUCTIONS CAREFULLY**

### TO OPEN LID CORRECTLY



- 1 Twist and Pull Locking Pin out of lid using ring. Pin will stop before it comes fully out.
- 2 Lift lever on lid until it flips all the way back.
- 3 Using lever, lift lid up to open.

### TO CLOSE LID CORRECTLY



- 1 Using lever, lift lid up and forward to rest seal in place.
- 2 Push lever back and down all the way until arms have slid through side bars.
- 3 Twist and Push Locking Pin into guide on lid until it comes out the other side.

**PROQUIP**  
VALUE ADDED PRODUCTS

**Pro Quip International**

14 London Dve Bayswater VIC 3153 Australia

Tel: (03) 9761 1110 Email: sales@proquip.com.au

[www.proquip.com.au](http://www.proquip.com.au)